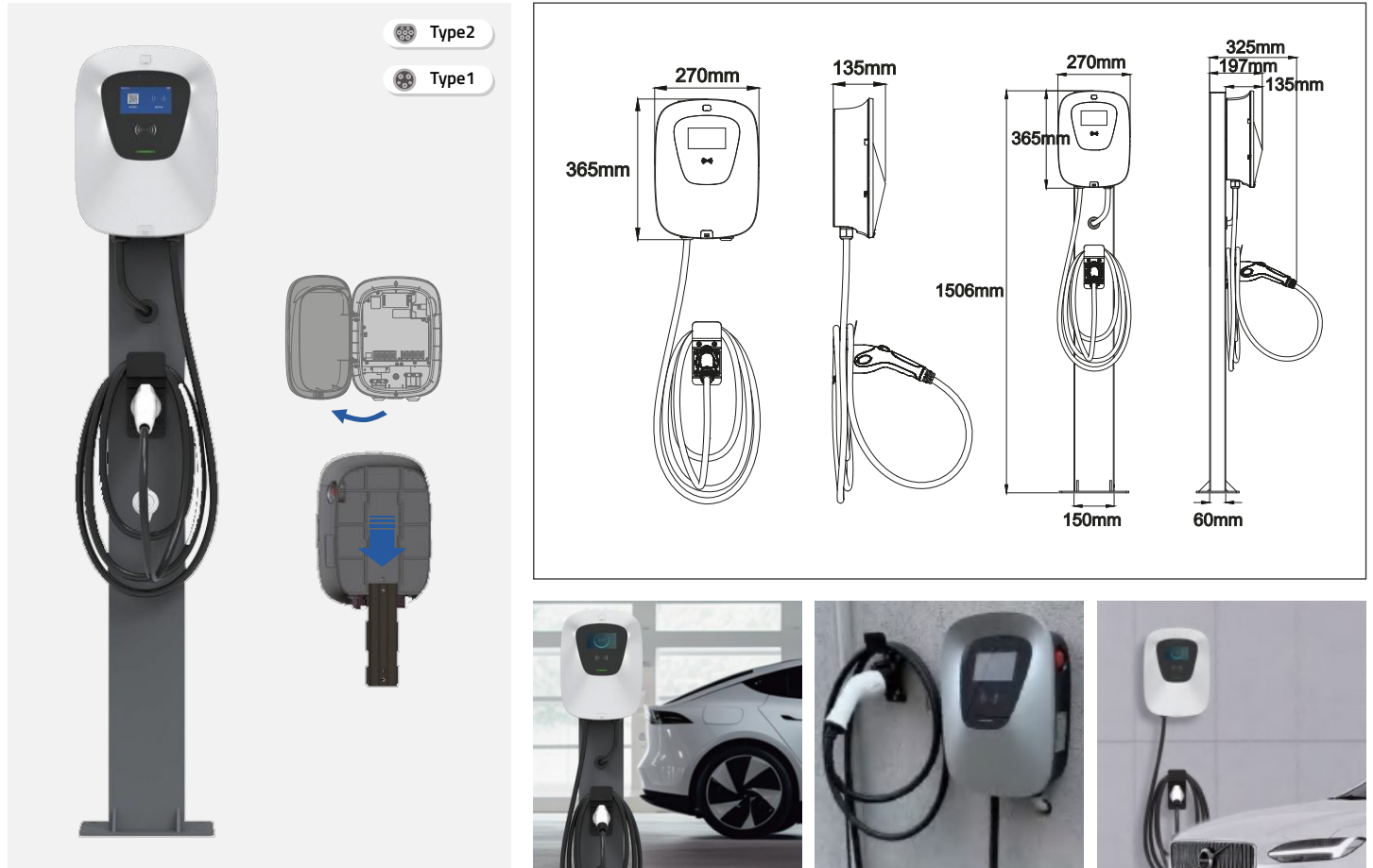




AC EV Charger Commercial Series 7kW/11kW/22kW

Flexible and high cost-effective EV charger



- Ideal choice for residential and commercial EV charging
- Stylish, ergonomic and customizable design
- IP55 rated for indoor/outdoor applications
- Optional RFID/App etc. for user identification and management
- Multiple protection to ensure users' safety
- Charger Connector: SAE J1772 (Type 1)/IEC 62196-2 (Type 2)
- Optional wall-mount and stand-mount to save installation space for both indoor & outdoor applications

Applications

- Highway gas/service station
- Parking garage
- Commercial fleet operators
- EV dealer workshops
- EV infrastructure operators and service providers



AC EV Charger Commercial Series 7kW/11kW/22kW

Flexible and high cost-effective EV charger

Power Specifications	
Input Connection	Single-Phase: 1P+N+PE or 3-Phase: 3P+N+PE
Input Voltage	230Vac ±10% or 400Vac±10%
Input Current	16A or 32A
Frequency	50Hz or 60Hz
Output Voltage	230Vac ±10% or 400Vac ± 10%
Output Current	16A or 32A
Rated Power	7.4kW / 11kW / 22kW
User Interface & Control	
LCD Display	4.3" Color Touch Screen (Optional)
User Authentication	RFID (ISO/IEC 14443) / APP
LED Indicator	Green/Blue/Red
Charger Connector	IEC 62196-2 Type 2 (SAEJ1772 Type 1 Optional)
Energy Measuring	Embedded meter, with 1% accuracy
Communication	
Backend	Bluetooth / Wi-Fi (4G / Ethernet Optional)
Backend Protocol	OCPP 1.6 J (OCPP2.x Coming soon)
Protection	
Residual Current Protection	Type A 30mA+DC 6mA
Electrical Protection	Over/Under Voltage Protection, Over Current Protection, Short Circuit Protection, Over Temperature Protection, Lightning Protection, Ground Fault, Surge Protection.
Environmental	
Operating Temperature	-30 °C - +50 °C
Storage Temperature	-40 °C - +85 °C
Operating Humidity	Max. 93% RH, Non-Condensing
Operating Altitude	≤ 2000m
IP, IK Level	IP55, IK08
Cooling Method	Natural Cooling
Mechanical	
Product Dimension	270mm*135mm*365mm (W*D*H)
Package Dimension	330mm*274mm*500mm (W*D*H)
Charging Cable Length	5m (Customizable)
Weight	5.6kg (Net) / 7.2kg (Gross)
Mounting	Wall-mount and Stand-mount
Certifications	
Certificate	EN 61851-1 2019, IEC 62955 2018, IEC 61008-1 2010, IEC/EN 62196-1
Safety	TUV, CE